



Relax It's A  
**Sylvan**  
1992 FISHING BOATS



# 1992 Sylvan

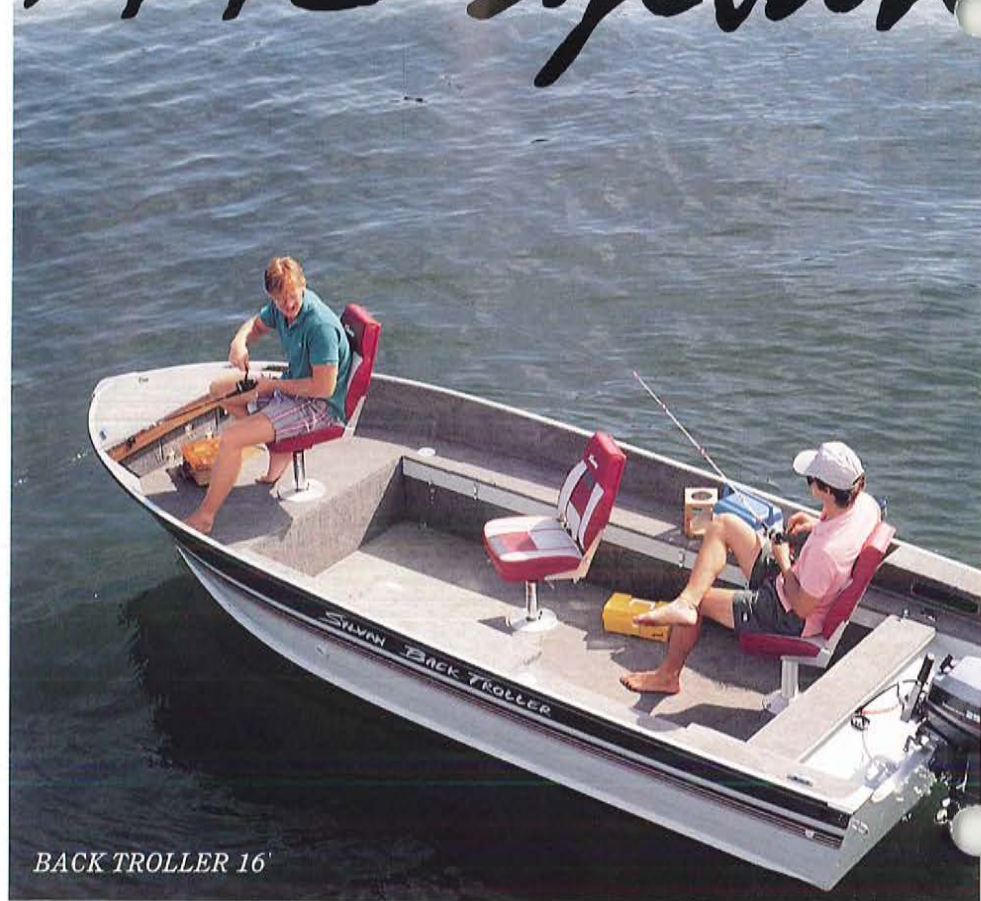
You'll find some of your favorite fishing spots right inside these quality, affordable Sylvan fishing boats. These tough customers are built for years of dependable fishing performance, and the rugged aluminum construction is backed by one of the most impressive warranties around. These models show why affordable, durable aluminum fishing boats are a Sylvan trademark.

## BACK TROLLER 16'

**Standards:** 17-gallon built-in gas tank • 4 cleats • Carpeted front deck and interior • Raised front casting platform • Bilge pump • Front storage • Lockable storage • Rod storage • Large live well with pump and ICU • Trolling motor receptacle • Interior lights • Running lights • Bold accent striping • 3 bass seats (1 fixed, 2 removable) • 3 CB bases • 3 cup holders • Treated floor and wood with 10-year warranty • Double row rivets and single bottom construction.

**Options:** Mooring cover • Sun top • Console • Ice cooler • Seat arms.

**Color:** Burgundy.



BACK TROLLER 16'



BACK TROLLER 17'

## BACK TROLLER 17'

**Standards:** 23-gallon built-in gas tank • 4 cleats • Side bumper rails • Carpeted floor and deck • Raised front casting platform • Bilge pump • In-floor storage • Front storage • Port and starboard lockable rod storage • Rod holders • 2 large aerated live wells with pump and ICU • Trolling motor panel • Interior lights • Running lights • 2 hydraulic removable bass seats • 1 fixed pedestal seat • 4 CB bases • Treated floor and wood with 10-year warranty • Double row rivets and single bottom construction.

**Options:** Mooring cover • Bow rails • Additional bass seats.

**Color:** Blue.



SEA MONSTER 15' W/CON

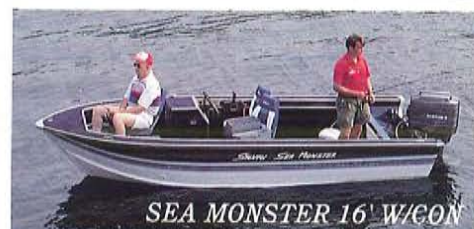
## SEA MONSTER 16'

Side Console

**Standards:** 4 cleats • Carpeted floor and deck • Raised front casting platform • Bilge pump • Lockable rod storage (Port side) • Large aerated live well with pump and ICU • Running lights • Horn • Bold accent striping • 3 bass seats (1 fixed with slider, 2 removable) • 3 CB bases • AM/FM stereo-cassette with exterior antenna • Treated floor with 10-year warranty • Double row rivets and single bottom construction.

**Options:** Bow rails • Mooring cover • Bimini top • Windshield • Seat arms • 1 bass seat.

**Color:** Blue.



SEA MONSTER 16' W/CON



SEA MONSTER 15'

## SEA MONSTER 15'

(Side Console & Tiller Models)

**Standards:** Carpeted floor and deck • Raised front casting platform • Bilge pump • Bow storage • Lockable rod storage (Port side) • Large front aerated live well with pump • Bow and stern removable running lights • Bold accent striping • 3 bass seats (1 fixed, 2 removable) and 3 CB bases (Side Console) • 2 bass seats (1 fixed, 1 removable) and 2 CB bases (Tiller Model) • 2 cup holders • Lockable storage • Glove box • Treated floor with 10-year warranty.

**Options:** Mooring cover • Windshield • Seat arms • Extra CB base & bass seat.

**Color:** Blue.



# Means Affordable Fin

**MERCURY  
OUTBOARDS**

## SEA SNAPPER 16' & 14'

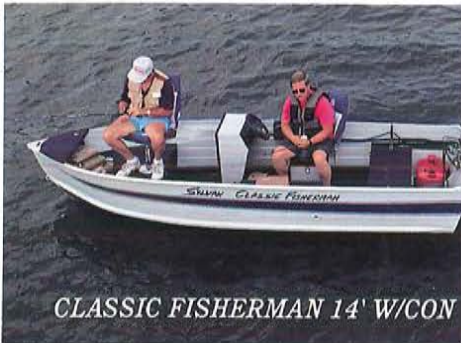
**Standards:** Aluminum seats • Oar locks • Stern castings • Bow castings • Non-skid interior.

**Options:** Console with steering • Clamp-on seat.

**Color:** White.



SEA SNAPPER 16' & 14'



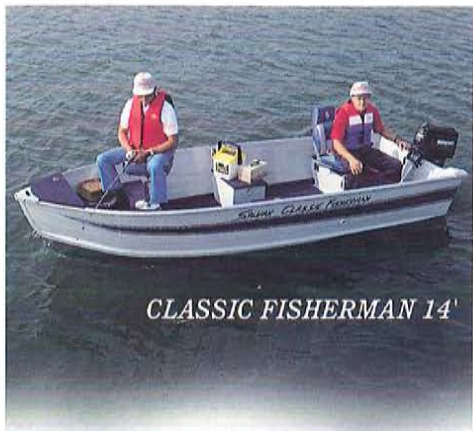
CLASSIC FISHERMAN 14' W/CON

## CLASSIC FISHERMAN 14'

(Standard Console & Tiller Models)

**Standards:** Carpeted floor • Raised front casting platform with storage • Aerated live well with pump • Trolling motor receptacle • Running lights • Bold accent striping • 2 bass seats (1 removable, 1 with swivel) • Rod holders • Side storage • Treated floor with 10-year warranty.

**Color:** Blue.



CLASSIC FISHERMAN 14'

## SUPER SNAPPER 16' & 14'

**Standards:** Marine carpet • Aluminum seats • Rod holders • Under-seat storage • Live well pump (16' only) • Thru-hull drain • Walk-thru seat • Raised bow platform (16').

**Options:** Mooring cover • Console with steering • Clamp-on seat.

**Color:** White.



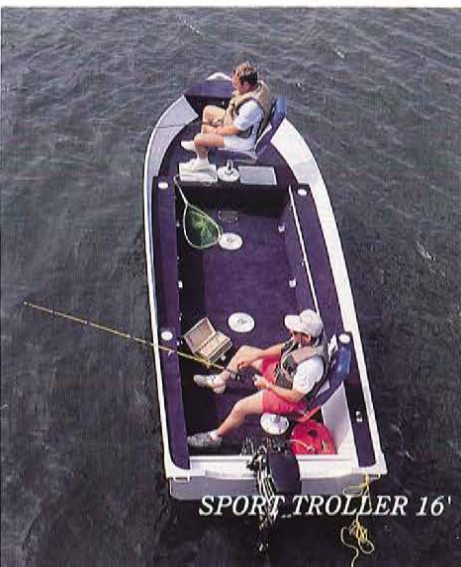
SUPER SNAPPER 14'



SPORT TROLLER 14'



SUPER SNAPPER 16'



SPORT TROLLER 16'

## SPORT TROLLER 16' & 14'

**Standards:** Carpeted floor • Raised front casting platform with storage • Dual rod storage • Glove box • Aerated live well with pump • Trolling motor receptacle (16' only) • Running lights • Bold accent striping • 2 bass seats (1 fixed, 1 removable) • 3 CB bases • 3 cup holders (16') • Treated floor with 10-year warranty.

**Options:** Mooring cover • Console.

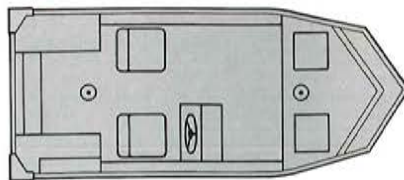
**Color:** Blue.

**MARINER**  
OUTBOARDS  
Better In The Long Run.

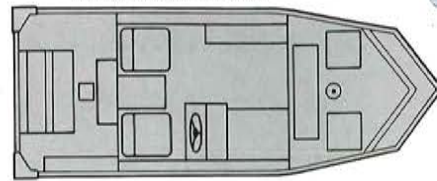


# Fishing Fun

1650 PRO CRAPPIE



1750 PRO BASS



## 1650 PRO CRAPPIE

**Standards:** All aluminum • Bow casting platform with storage • 2 aerated live wells • 2 removable bass seats • Instrumentation • AM/FM stereo-cassette with exterior antenna • Rod holders.

## 1750 PRO BASS

**Standards:** 12-gallon built-in gas tank • All aluminum • Bow casting platform with storage and live well • Rear casting platform with storage and live well • 2 removable bass seats • Instrumentation • AM/FM stereo-cassette with exterior antenna • Rod storage.

## 1544 CRAPPIE

**Standards:** All aluminum • Bow casting platform with storage • Aerated live well • 2 removable bass seats • Rod holders • Glove box • Center console.

## 1644 BASS

**Standards:** 12-gallon built-in gas tank • All aluminum • Bow casting platform with storage • Rear casting platform with storage and live well • 2 removable bass seats • Instrumentation • AM/FM stereo-cassette with exterior antenna • Rod holders.



## SEA BREEZE 14' & 12'

**Standards:** Aluminum seats • Oar locks • Stern castings • Bow castings • Non-skid interior.  
**Color:** White.

## ADVANTAGE 12'

**Standards:** Aluminum seats • Stern castings • Bow castings • Non-skid interior • Oar locks.  
**Options:** Mooring cover • Clamp-on seat.



## YUKON 15' & 13'

**Standards:** Aluminum seats • Oar locks • Stern castings • Bow castings • Non-skid interior.  
**Options:** Mooring cover • Console with steering • Clamp-on seat.  
**Color:** Blue.

## 1672 & 1472 JON



1457 JON

## 1457 JON 1672 JON & 1472 JON

**Standards:** Aluminum seats • Oar locks • Stern castings • Bow castings • Non-skid interior.  
**Options:** Mooring cover • Clamp-on seat.



STRIKER 15'

## STRIKER 15'

**Standards:** Aluminum seats • Oar locks • Stern castings • Bow castings • Non-skid interior.  
**Options:** Mooring cover • Clamp-on seat • Console with steering.  
**Color:** Gray.



CANOE 17', 16' & 15'

## CANOES

For backwater country, the Sylvan 1992 canoes are available with both double-end and square-stern styles. The safety construction on every model assures you of the dependability that is the hallmark of the Sylvan reputation. Double-end models include 15' and 17' canoes. The square-stern model is 16'.



# Fishing Boats Specifications

Model	Center length	Beam	Transom width	Depth	Maximum H.P.	Weight	Alum. thick.	Capacity lbs.	People capacity
Back Troller 17'	16' 9"	83"	79"	37 $\frac{1}{2}$ "	115	720	.100	1550	6
Back Troller 16'	16' 2"	76"	70"	33 $\frac{1}{2}$ "	60	620	.080	1350	5
Sea Monster 16'	16' 2"	76"	70"	33 $\frac{1}{2}$ "	90	610	.080	1200	4
Sea Monster 15'	15' 5"	72"	61 $\frac{1}{4}$ "	32"	50	540	.070	1000	4
Classic Fisherman 14'	14' 2"	63 $\frac{1}{2}$ "	56"	30"	35	380	.064	850	4
Sport Troller 16'	16' 10"	83"	61 $\frac{1}{4}$ "	33"	40	420	.064	1100	4
Sport Troller 14'	14'	63"	59"	29 $\frac{3}{4}$ "	40	350	.064	975	4
Sea Snapper 16'	16' 5"	66"	61 $\frac{1}{4}$ "	31"	40	330	.064	1100	5
Sea Snapper 14'	14' 2"	64"	56 $\frac{1}{2}$ "	30"	30	210	.064	850	4
Super Snapper 16'	16' 5"	67"	60"	31"	40	370	.070	1100	4
Super Snapper 14'	14' 2"	64"	56 $\frac{1}{2}$ "	30"	35	285	.064	850	4
1650 Pro Crappie	16'	75"	-	22"	60	-	.080	950	3
1544 Crappie	15'	67"	-	22"	45	-	.070	850	3
1750 Pro Bass	17'	75"	-	22"	60	-	.080	950	3
1644 Bass	16'	67"	-	22"	45	-	.070	850	3
Sea Breeze 14'	13' 10"	58"	50 $\frac{1}{2}$ "	20"	15	126	.050	695	3
Sea Breeze 12'	11' 9"	56"	50 $\frac{1}{2}$ "	20"	10	112	.050	565	3
Advantage 12'	11' 9"	52"	46 $\frac{1}{2}$ "	17"	7.5	93	.050	455	2
1672 Jon	16'	72"	68"	19"	45	-	.072	900	4
1472 Jon	14'	72"	68"	19"	35	-	.072	900	4
1457 Jon	14'	57 $\frac{1}{2}$ "	55"	16"	15	-	.070	615	3
Yukon 15'	14' 11"	68"	58 $\frac{3}{4}$ "	27"	35	220	.064	850	3
Yukon 13'	12' 11 $\frac{1}{2}$ "	65 $\frac{3}{4}$ "	56 $\frac{1}{4}$ "	26"	15	190	.064	700	4
Striker 15'	15' 5"	72"	61 $\frac{1}{4}$ "	32"	40	340	.070	1100	4
Canoe 17'	17'	39"	-	-	-	80	.050	730	4
Canoe 16'	15' 10"	39"	-	-	-	78	.050	715	3
Canoe 15'	15'	37"	-	-	-	74	.050	575	3

## 14 Reasons to Buy Sylvan Fishing Boats

The beauty of a Sylvan boat goes well beyond that which is obvious to the eye. Advanced engineering techniques, solid construction features and the hands-on participation of the Sylvan management team are what makes these boats special. See for yourself how these boats beat the competition, then buy a Sylvan.

1. Smooth riding performance V-hull that planes quickly and runs efficiently.
2. All incoming aluminum raw materials are quality tested in our own quality control lab.

3. Rugged construction including double riveted hulls, reinforced under floor, up to .125 gauge aluminum thickness, and an aluminum covered transom.

4. Fade-resistant, durable paint and striping.
5. High grade marine vinyls and plush carpets are U.V. resistant.
6. Non-corrosive fittings with stainless steel fasteners.
7. Ample storage space for fishing and fun gear.
8. Custom-fitted upholstery fabricated and installed in our factory for rigid quality control.

9. Custom wiring and instrumentation made to our specifications.

10. AM/FM stereo-cassette with built-in speakers.
11. Rack and pinion steering on most models.
12. Large aerated live wells with ICUs in most fishing models.
13. Sylvan boats meet or exceed all U.S. Coast Guard specifications for your boating pleasure and safety.
14. All riveted aluminum boats are covered by our exclusive 10-year limited warranty.

## Sylvan Limited Warranty

Sylvan warrants each new fiberglass hull and aluminum welded hull for a period of two (2) years and each new riveted aluminum hull for a period of ten (10) years from the date of purchase, by the original purchaser (based on years of use, under normal recommended operating conditions) as described in the warranty folder. A copy of the Sylvan Limited Warranty is attached to each new Sylvan boat, or may be obtained from any Sylvan dealer or the Sylvan factory.



# SYLVAN



*The Only Logical Choice*



Better In The Long Run.

#### SYLVAN MARINE MAIN

P.O. Box 65  
68143 Clunette Street  
New Paris, Indiana 46553  
(219) 831-2950  
FAX (219) 831-7012

#### SYLVAN MARINE SOUTH

P.O. Box 1267  
510 Calaway Church Road  
LaGrange, Georgia 30241  
(404) 882-1438  
FAX (404) 882-9562

#### SYLVAN MARINE WEST

P.O. Box 219  
1075 Wilco Road  
Stayton, Oregon 97383-0129  
(503) 769-2996  
FAX (503) 769-5835

Optional equipment is shown in some photographs used in this brochure. Please confirm standards and options with your dealer.

All warranty information is available from your Sylvan dealer or directly from Sylvan Marine. Please write for more information.

If you don't find the boat to fit your needs in this brochure, ask your dealer about the other fine boats from Sylvan Marine.

Note: In our continuing efforts to build the best quality boats at affordable prices, it may become necessary, during the course of the year, to change specifications or materials used in construction. We reserve the right to make changes without prior notification.